



VISION

BC Road Builders & Heavy Construction Association is the recognized advocate for investment in core infrastructure and a balanced safe transportation system that creates economic growth, strong communities and a sustainable environment.

Membership Package

ABOUT US

The **BC Road Builders and Heavy Construction Association (BCRB&HCA)** was established in 1966 by twelve founding firms. In 1989, the maintenance sector joined the Association's construction and service and supply sectors in order to provide a single, unified voice for the industry. Since that time, the Association has grown to include over 265 members representing privatized highway maintenance contractors, construction contractors, underground/utility contractors, paving contractors and the various service and supply companies to the industry.

The BCRB&HCA is a non-profit organization representing a collection of competitive firms engaged daily in all aspects of road building, rehabilitation, heavy construction, highway maintenance and the supply of related goods and services. The Association is registered under the Societies Act and is governed by its constitution and by-laws.

We pride ourselves in bringing the industry together to work together to discuss issues, to find solutions to challenges, to maximize business opportunities and to celebrate our successes together.



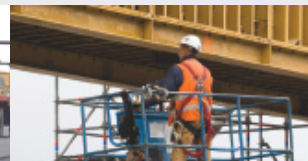
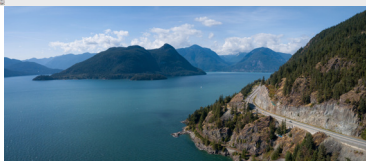
MISSION

We communicate strong, clear industry positions and expectations to governments and stakeholders.

We continue to advance the diversity of our workforce, the prosperity of their families and the communities they live in.

We promote innovative, sustainable and best value solutions.

We provide training, safety awareness, fellowship, ethical leadership and a strong voice for our members.



Membership Benefits

GOVERNMENT RELATIONS

Advocacy and representation when the Association meets with all levels of government and other stakeholders, including:

- Communication with all three levels of government regarding members' interests on labour relations, employment standards, workers compensation, employment insurance, regulations and tax acts.
- Advocacy relating to standardized methods of submitting and accepting tenders.
- Facilitated information sharing during labour negotiations.
- Specialized committees formed to give concentrated effort to solve problems in areas of specific member interest.
- Participation in the development and inclusion in a membership roster that is enclosed in the government-authorized **Blue Book Equipment Rental Rate Guide** allowing members' free listings to be seen by all public owners, as well as provincial, municipal and federal agencies.
- Advice regarding individual government-related concerns.
- Membership in the **Canadian Construction Association (CCA)**, our national lobby group.

COMMUNICATIONS

- Industry news and information delivered through the Association's weekly e-bulletin, periodic information bulletins and Association updates and member profiles in *The Voice*, our association publication.
- Business opportunities updated weekly in the Members' Only area of the website with the Tender Summary, which includes bids and results from the municipal, provincial, and federal governments, delivered within the e-bulletin.

EVENTS & NETWORKING

- Networking opportunities at the Association's signature events:
 - Annual Ivan Hanchard Charity Golf Tournament
 - Fall Conference
 - Annual General Meeting & Winter Celebration
- Facilitated sharing of new technology and innovation among the membership and promotion of cooperation between Association members and industry trades.
- Private office and meeting room space available; meeting facilitation services upon request.

TRAINING

- Training in a variety of areas as well as environmental, and fellowship programs.
- Access to resources from the **BC Construction Safety Alliance**.
- Access to BuildForce Canada's construction industry training programs.
- Fundraising and networking for the Betty Spalton Scholarship, which provides financial support to individuals obtaining an education in fields associated with the road building and heavy construction industry.

AFFINITY PROGRAMS

- Discounts and special offers through affinity programs, including:
 - Fairmont properties
 - Accent Inns
 - Chevron Canada
 - Mark's Work Wearhouse



Membership Application

Company Name: _____

Address: _____

City/Province: _____ Postal Code: _____

Phone: _____ Email: _____

Website: _____ Twitter: _____

LinkedIn: _____ Instagram: _____

Other Social Media: _____

Number of Employees: _____ Years in Business: _____ WCB#: _____

List the names of two senior managers who will represent your firm (name & title):

Main Contact: _____ Senior Manager: _____

Type of Business (summarize in a sentence the goals/services your company provides):

Sponsoring Member Company: _____

Contact Name: _____

Contact Number: _____ Contact Email: _____

Please see our membership directory or visit www.roadbuilders.bc.ca for a complete list of existing member companies who will act as a sponsor/reference. This is merely to ensure the legitimacy of applications received.

Membership Category (see below for fees)

☐ Contractor ☐ Maintenance ☐ Service & Supply ☐ Affiliate

Membership Fee Group Number: _____ Primary Activity: _____

Signature of Representative: _____ Date Signed: _____

Contractor Member Fees

Gr #	Annual Volume (M\$)	Annual Fee
1	\$0 – 3.0	\$2,244
2	\$3.0 – 5.0	\$2,804
3	\$5.0 – 10.0	\$3,928
4	\$10.0 – 25.0	\$4,772
5	\$25.0 – 50.0	\$5,612
6	\$50.0+	\$7,500

Service & Supply Member Fees

Gr #	Annual Volume (M\$)	Annual Fee
7	\$0 – 10.0	\$1,376
8	\$10.0 – 20.0	\$2,494
9	\$20.0+	\$3,614

All new applications must be accompanied with payment for one year's dues (GST plus TI Support Fee) before they can be processed (amount will be confirmed before processed). GST added to dues; plus \$200/year Transportation Investment (TI) Support Fee. Fees will be prorated for the year depending on month of joining. **For further information, please contact the Association.

ANNUAL FEE PAYMENT:

☐ Credit Card (Visa or Mastercard only)

Credit Card No: _____ - _____ - _____ - _____ Expiry: _____

Cardholder Name: _____

Signature: _____

☐ Cheque (enclosed with application)

Please make cheques payable to the BC Road Builders & Heavy Construction Association

Please submit completed application forms to:
roxanne@roadbuilders.bc.ca